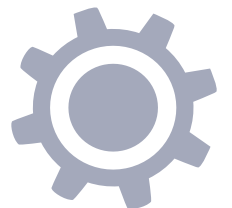
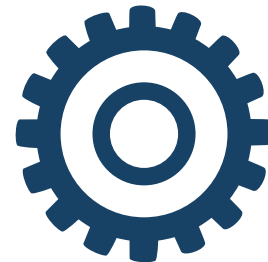


CELEBRATE FLATHEAD MANUFACTURING

SEPTEMBER - OCTOBER '19

KALISPELL
Chamber of Commerce
Convention & Visitor Bureau



SEPTEMBER - OCTOBER 2019

Join us as we celebrate 5 years of Flathead Manufacturing Month

Manufacturing continues to be a major contributor to the Flathead, representing the largest basic industry earnings sector in our local economy, and paying an average of \$140 million in wages each year. In the past, this industry was dominated by powerhouses in timber, semiconductor, and aluminum manufacturing, but recently, it's been smaller manufacturers that have been rapidly on the rise. The Flathead is now home to hundreds of unique manufacturing firms representing machined products, communication equipment, firearms, food and beverage, pharmaceuticals, energy, and more.

This year, we'd like to invite you to celebrate the breadth and quality of products made right here in the Flathead Valley during Flathead Manufacturing Month, our series of events that sprouted from National Manufacturing Day, the first Friday in October annually. We hope you use this program as a chance to learn about what's made here, how Montana fits into the national manufacturing stage, and what high-quality, high-paying jobs are available right here, right now.



Learn more and register for any of this year's
FREE events at www.kalispellchamber.com.

Closed-toed shoes required for all tours.

Flathead MFG Month is
Presented By:

Title Sponsor



Gold Sponsors:



DAILY INTER LAKE



Silver Sponsor:



Bronze Sponsor:

Glacier Bank

SPRING

HURRY, SPACE IS LIMITED!

Many tours have limited spaces available for participants, so you will need to **register for any of these FREE events at www.kalispellchamber.com**. Closed-toed shoes are required on all tours. See tour descriptions pages 8-10.

MONDAY, SEPTEMBER 30

4:00pm - Flathead Lake Brewing Company

TUESDAY, OCTOBER 1

9:30am - Weyerhaeuser

11:30am- Sonju Industrial, Falcor Defense, Dracos Barrels

WEDNESDAY, OCTOBER 2

10:00am - Applied Materials Pt. 1, Birch Grove

1:00pm - Applied Materials Pt. 2, Reserve Drive

2:30pm - Converting Equipment International

4:00pm - Sacred Waters Brewing Company

5:00pm - Glacier Sun Winery/Rough Cut Cider

THURSDAY, OCTOBER 3

9:30am - Defiance Machine

11:00am - Kalispell Creamery

2:00pm - Kalispell Brewing Company

3:30pm - Connector Tech

FRIDAY, OCTOBER 4

9:00am - PROOF Research

11:00am - Glacier Distilling Company

1:00pm - Glacier Steel Roofing

2:00pm - Glacier Precast Concrete

3:30pm - Nomad Global Communication Solutions

TUESDAY, OCTOBER 8

5:00 - 6:30pm - UNWIND with Mountain Meadow Herbs and the Daily Inter Lake

THURSDAY, OCTOBER 17

12:30 - 5:00pm - Flathead Timber Tour



DISCOVER MODERN MANUFACTURING

U.S. manufacturing equates to the 9th largest economy in the world, but is an industry that is widely misunderstood. Jobs in manufacturing are often perceived as low-quality and low-paying, and firms often take up shop in the unmarked buildings we drive by daily. In Montana, manufacturing represents one of the largest industries, provides some of the most rewarding careers and development opportunities, and is continuously advancing to be cutting edge, high-tech, and innovative. Explore the next six pages to learn about manufacturing, what careers look like a,nd opportunities to get inside those typically unmarked buildings to see it all in action for yourself.

Let's take a look at what manufacturing looks like in Montana

TOP MANUFACTURING IN MONTANA



COMMUNICATIONS &
ELECTRONICS



WOOD
PRODUCTS



PHARMACEUTICALS



FOOD &
BEVERAGE



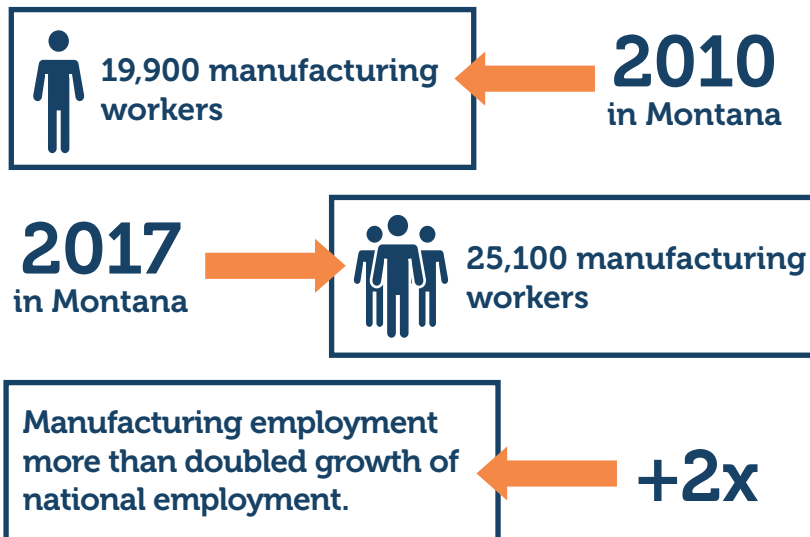
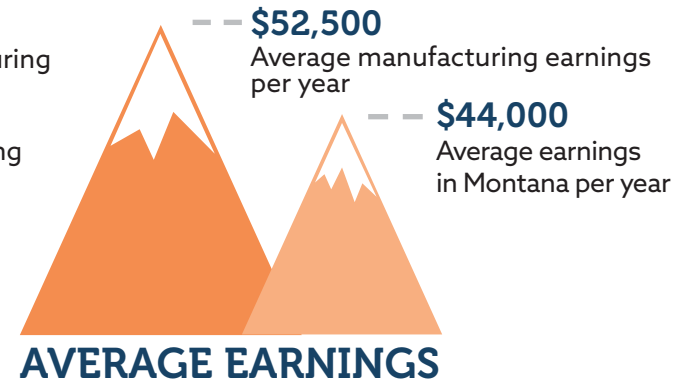
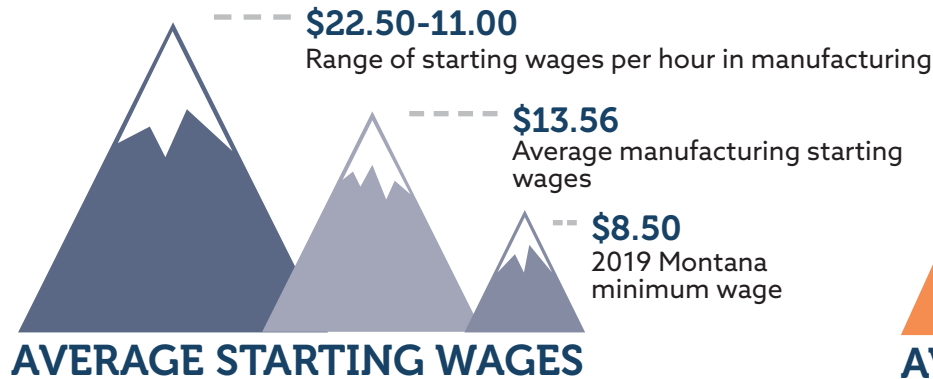
MACHINERY



259
are located
in Flathead
County

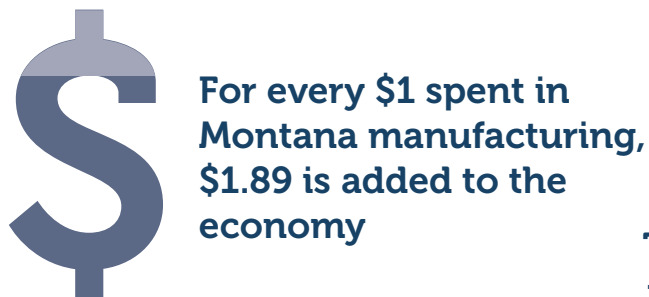
Third-largest
manufacturing
county

70%
have fewer than
10 employees



TOP 10 COUNTRIES FOR MT MANUFACTURING EXPORTS

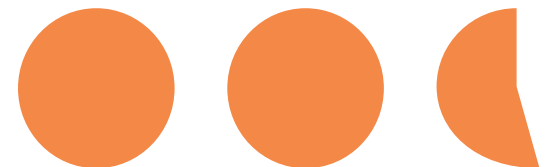
1. Canada
2. China
3. Republic of Korea
4. Taiwan
5. Belgium
6. Japan
7. United Kingdom
8. Mexico
9. Germany
10. Netherlands



There will be an estimated 2.4 million unfilled manufacturing jobs between 2018-2028

2.58

jobs are created for every 1 job in manufacturing in Montana



The #1 issue facing manufacturers was the lack of availability of workforce

51% of manufacturers said gross sales increased over 2017

54% of manufacturers said their production increased over 2017

2018

2019

Availability of a skilled workforce still #1 issue hampering growth

65% of manufacturers expect gross sales to increase over 2018

62% of manufacturers expect their production to increase over 2018

SAFE, HIGH-TECH, HIGH-PAYING & REWARDING CAREERS



LEAH SANDLIN
QUALITY CONTROL TECHNICIAN
WEYERHAEUSER

"I started at Weyerhaeuser 18 years ago at an entry-level position and have been able to grow my career by volunteering with the United Way Forestry Expo and working my way up through being a Team Leader to my current position.

As a Quality Control Technician, I get to insure our plywood products are meeting quality standards with their glue line, length, width, and that they fit all of the necessary certification requirements. I work to make sure the machines are working properly and the teams of our employees have everything they need to make the most quality product.

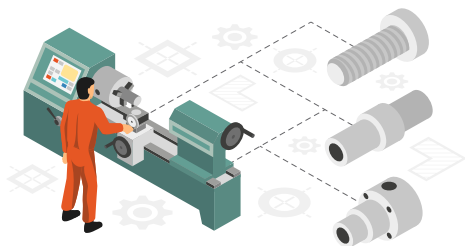
For me, the most rewarding part of my job is when a product goes to our customer and they are beyond satisfied with what we have been able to make. I'm looking forward to continuing to grow my career and reach my next goal of being a supervisor."

There is a common misconception that careers in the manufacturing industry fall into the four Ds - dark, dirty, dull, and dangerous- when in fact, the opposite couldn't be more true. Advanced manufacturing provides safe, high-tech, and high-paying careers that cater to a variety of an individual's interests. From CNC machinists who program intelligent machines that shape parts and tools, to the engineers who design products and product flows, and the graphic designers and marketing professionals who design labels, catalogs, and media campaigns, nearly every profession can be found within the manufacturing industry. Take a look at some of the common jobs available right now here in the Flathead Valley along with their average starting wages.

CNC MACHINIST/PROGRAMMER

Programs mills and lathes by entering instructions using basic math, geometry, and trigonometry. Installs and adjusts tools and attachments. Maintains specifications by observing drilling, grooving, and cutting, including turning, facing, knurling and thread chasing operations; taking measurements; detecting malfunctions; troubleshooting processes; adjusting and reprogramming controls; sharpening and replacing worn tools; adhering to quality assurance procedures and processes.

AVG. STARTING WAGE: **\$28/hour**



WELDER

Fabricate and assemble metal structures and equipment through the use of welders, cutters, shapers, and measuring tools by interpreting project plans, blueprints and other written instructions and diagrams. Performs various types of welds based on project needs. Field install welds, including duct work, light fixtures, vents, fans, metal sheeting and other parts.

AVG. STARTING WAGE: **\$15-20/hour**



QUALITY ASSURANCE

Ensures that the final product observes the company's quality standards. In general, these detail-oriented professionals are responsible for the development and implementation of inspection activities, the detection and resolution of problems, and the delivery of satisfactory outcomes. Achieves quality assurance operational objectives by contributing information and analysis to strategic plans and reviews; prepares and completes action plans; implements production, productivity, quality, and customer-service standards; identifies and resolves problems; completes audits; determines system improvements; implements change.

AVG. STARTING WAGE: **\$17/hour**

Wage and job data provided by LC Staffing and the Montana Manufacturing Extension Center

GRAPHIC DESIGNER

Works on designing the packaging and promotion of a company's products, including the development of logos, layouts, illustrations, and often the collection of photography and development of verbiage. Creates websites, print materials and company marketing collateral.

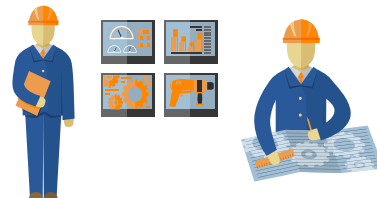
AVG. STARTING WAGE: **\$15/hour**



PROJECT MANAGER

Meets with clients to take detailed ordering briefs and clarify specific requirements of each project. Delegates project tasks based on other staff members' individual strengths, skill sets and experience levels. Tracks project performance, specifically to analyze the successful completion of short and long-term goals. Meets budgetary objectives and makes adjustments to project constraints based on financial analysis. Develops comprehensive project plans to be shared with clients as well as other staff members. Uses and continually develops leadership skills.

AVG. STARTING WAGE: **\$16/hour**



OTHER CAREERS

Accounting Assistant
Accounting Clerk
Accounts Payable Specialist
Assembly
Customer Service Liaison
Customer Support/Technician
Electrical Technician
Fabrication Technician

Financial/Inventory Analyst
Finish Technician
Gun Manufacturing Assembly
Inspector
Inventory Clerk
Laborer
Lumber Grader/Sorter
Maintenance Technician

Marketing Director
Material Analyst
Mill Labor
Office Assistant
Office Coordinator
Plastics Manufacturing Worker
Press Operator
Production Artist

Production Technician
Project Coordinator
Purchasing Support
Technical Writer
Warehouse Clerk

WOMEN IN MANUFACTURING



Women currently make up about 47% of U.S. labor force....

...but currently represent just 27% of the labor force in manufacturing.

HAVING WOMEN ON LEADERSHIP TEAMS CAN HELP MANUFACTURERS DELIVER...



84% innovative & creative approaches & solutions

88%

diverse perspectives in decision making



74% balanced organizational management



49% improved financial performance

"I think that women in manufacturing bring a unique perspective and different way of looking at things. For us, having women in our company allows us to consider perspectives like focusing on children and family, and being a company with great culture."

This career in manufacturing has allowed me to grow from Marketing Assistant to now Marketing Director, overseeing projects like community outreach along with design aspects like creating our product labels and catalogs, and gaining supervisory experience."

KELLY PRIS
MARKETING DIRECTOR,
MOUNTAIN MEADOW HERBS

EVENTS & TOURS

Monday, September 30

FLATHEAD LAKE BREWING COMPANY

4:00pm - 116 Holt Dr. Suite A, Bigfork



The Flathead Lake Brewing Company started in 2004 in Woods Bay. Naming the brewery wasn't hard as FLBC overlooks the shores of the largest freshwater lake in the West – and most would argue the most beautiful. By 2015 a second brewing facility opened and began production in Bigfork. FLBC strives for high-quality beer with the least amount of environmental impact. They have built their modern facility with reused materials, solar energy, and waste collection systems. FLBC was

awarded the 2018 Sustainabrew Award and received third place in 2018 and fourth place in the 2019 nationwide Brews from the Sun competition to crown America's favorite solar brewery! On this tour, Director of Brewing Operations, David Brendgard, will lead visitors through FLBC's state-of-the-art facility and detail the sustainable and environmentally friendly aspects of the system. Closed-toed shoes are required. Tour is limited to 25 people.

Tuesday, October 1

WEYERHAEUSER - KALISPELL COMPLEX

9:30am - 75 Sunset Dr., Kalispell



Weyerhaeuser

Visitors will tour both the Plywood and Lumber plants, which showcase unique products with exceptionally aesthetic qualities and Weyerhaeuser's dedicated workforce. Mainly Douglas fir and Western larch are used at Weyerhaeuser due to their ability to produce fine grain and smooth faces. This Kalispell plant manufactures plywood products to various grades, dimensions, and performance standards appropriate for a wide

range of customer and end-uses, while the lumber plant manufactures solid sawn studs, available in various lengths to domestic markets coast-to-coast. Tour is limited to 30 people.

SONJU INDUSTRIAL, FALCOR DEFENSE, & DRACOS BARRELS

11:30am - 2902 US HWY 93 North, Kalispell



Take advantage of this unique opportunity to tour three innovative woman/minority owned companies; all located in one 50,000 square foot facility. Sonju Industrial is an award-winning aerospace manufacturer which offers turn-

key solutions in CNC machining, process finishing, and assembly. Its core competencies include building components and assemblies for numerous military and commercial platforms that include missile, aircraft, bomb ordnance, torpedo,



and radar, as well as firearm components for their very own Falkor Defense. Falkor Defense is a world class firearm company that builds multiple rifle platforms. Dracos Barrels is a straightjacket barrel system that reduces barrel whip, drastically reduces heat, and is incredibly accurate. Their products are 100% made in the USA and are held to the highest manufacturing standards. As Falkor and Dracos continue to evolve, their reputation continues to grow as two of the most innovative, accurate, and reliable firearm and barrel manufacturers. All participants must be a US citizen with an official ID and sign a non-disclosure agreement prior to the tour. Tour limited to 50 people.

Mountain Meadow Herbs & the Daily Inter Lake Host Business After Hours

5:00 - 6:30PM - 1019 HARD ROCK RD., SOMERS

Join us for an after-hours networking opportunity at the newly constructed Mountain Meadow Herbs, located in Somers. Mountain Meadow Herbs is a manufacturer of more than 40 proprietary blends and formulas made of fresh, pure extracts of herbs that target supporting specific organs and body systems. From mineral support with Herbal Calcium and Herbal Iron, to immune-boosting specific organ support, Mountain Meadow Herbs provides healing at its best.

Attend this open-house event, co-hosted with the Daily Inter Lake, to tour the manufacturing operations at the facility while enjoying small bites from the Mountain Meadow Herbs Cafe menu. Beer and wine will be available, along with the opportunity to win raffle baskets and other prizes.

Registration for this event is not required.

Wednesday, October 2

APPLIED MATERIALS - PT. 1 BIRCH GROVE

10:00am - 3850 HWY 2 East, Kalispell



Birch Grove, part of the Applied Materials PPC Business Unit in Kalispell, is a 75,000 square-foot fabrication facility that employs 130 individuals over multiple shifts and has over 60 CNC machines. Manufacturing capabilities include CNC laser cutting, bending of heavy gauge sheet metal, powder coating, CNC machining, and metal/plastic welding. It provides engineered build-to-print components for the fast-paced, high precision semiconductor industry. The tour will include all capabilities listed above. On arrival please park in the large lot on the east side of the building. Enter at the main entrance at the southeast corner of the building. Tour limited to 30 people.

APPLIED MATERIALS - PT. 2 RESERVE DRIVE

1:00pm - 655 W Reserve Dr., Kalispell



The Reserve facility is the HQ for the Applied Materials PPC Business Unit in Kalispell. Approximately 350 individuals are employed at the facility. There will be a short presentation on Applied Materials and some specific information about the PPC Business Unit in Kalispell. The tour will be about 45 minutes. It will highlight the manufacturing areas, the process lab and the R&D area. On arrival please park in the front of the building in the visitor parking or in the first lot on the left and enter at the front entrance of the building. Tour limited to 30 people.

CONVERTING EQUIPMENT INTERNATIONAL (CEI)

2:30pm - 5355 HWY 2 West, Columbia Falls



Converting Equipment International's mission is to manufacture the highest quality equipment in the converting industry through innovation, collaboration, and integrity. Located at the gateway to Glacier National Park, CEI proudly manufactures inspector-slitter-rewinders for the narrow-web printing and packaging industries, sold worldwide. CEI also builds other high-speed equipment, including commercial die-cutters, laminators, digital finishers, and cutting-edge digital hybrid presses. Their dependable customized machines are all individually made per each client's specific requirement. During this tour, CEI will cover their manufacturing process from concept through delivery, including: engineering, the machine shop, inventory control, assembly, and testing.

SACRED WATERS BREWING COMPANY

4:00pm - 3250 HWY 2 East, Kalispell



Open and operating since November 2018, Sacred Waters Brewing Company is a celebration of wild places and good people. It's a reflection of everyone's special place outside, everyone's Sacred Waters. During this tour of the brew house, you'll get an overview of how their beer is made and see the ingredients and equipment that make it happen. They love showing people the process behind their locally handcrafted beer! Closed-toed shoes are required. Tour limited to 30 people.

GLACIER SUN WINERY & ROUGH CUT CIDER

5:00pm - 3250 HWY 2 East, Kalispell



Get an inside look at the newly remodeled Glacier Sun Winery and Rough Cut Hard Cider facility. This tour will include an overview of the wine and cider making processes, provide opportunities to explore the equipment used to crush grapes, to bottle wine, and you can also try samples! Glacier Sun Winery has been established in the Flathead since 2011 and partnered with Rough Cut Hard Cider July 2018. Must be 21 or over to sample.

Thursday, October 3

DEFIANCE MACHINE

9:30am - 3881 MT HWY 40, Columbia Falls



Defiance Machine is a firearms manufacturer that has a world-wide reputation for visionary design and precision manufacturing. Step out onto the shop floor to see where the nation's first-choice rifle actions are made. You'll be able to see the entire manufacturing process from start to finish, look inside top-of-the-line CNC machines as they work, and learn how bolt actions are tested for complete accuracy. Tour limited to 25 people. All participants must be a US citizen with official ID, have no criminal convictions, and must complete a non-disclosure agreement prior to the tour.

KALISPELL KREAMERY

11:00am - 480 Lost Creek Dr., Kalispell



Kalispell Creamery and Headstrom Dairy produce, process, bottle, and distribute all-natural, cream-on-top milk throughout Montana. By practicing sound animal husbandry, maintaining high-quality milk practices, and using a variety of marketing techniques, Kalispell Creamery continues to provide completely natural dairy products that include cream-on-top, whole, reduced-fat and skim milk, in addition to half-and-half, heavy cream, and delicious yogurt. Starting at the source, visitors will have the opportunity to walk through the process that Kalispell Creamery takes, all the way from the cow to the shelf, and as a bonus, everyone will have the opportunity to sample milk and some of Kalispell Creamery's famous yogurt. This is a working farm, so wear closed-toe shoes and dress for the weather.

KALISPELL BREWING COMPANY

2:00pm - 412 Main St., Kalispell



Open and operating since 2014, Kalispell Brewing Company was the first craft brewery in Downtown Kalispell since the 1960s! During this tour, you'll get out on Kalispell Brewing's production floor and see all of the brewing equipment in action, in addition to an overview of the entire brewing process, KBC's history, and operations.

CONNECTOR TECH

3:30pm - 135 Industrial Ct., Kalispell



Connector Tech is a value-added distributor of high-reliability electronic interconnect products serving a variety of harsh environment applications in the industrial, aerospace, & military markets. The company is a well-recognized franchised distributor of interconnect products from leading connector OEMs, including Souriau-Sunbank Connection Technologies, SPI-Connects and Detronics. Connector Tech specializes in cable assembly and plastic injection overmolding. Products are used in the commercial, oilfield, aerospace and military fields. Visitors will have the opportunity to tour their entire facility, learn about specialized cable and overmold assembly, and see product lines in various stages assembly processes. Closed-toed shoes are required and NO cell phones or camera devices. Must be a US Citizen to tour the facility. Limited to 45 people.

Friday, October 4

PROOF RESEARCH

9:00am - 10 Western Village Ln., Columbia Falls



PROOF Research is a science-based company that has brought together the finest minds, experience, and innovations in the industry to produce world-class stainless steel, carbon fiber rifle barrels and complete rifle systems. Step inside PROOF's manufacturing facility to see the process of making barrels, carbon fiber stocks, and complete rifles before visiting their 100-meter indoor test facility. Each participant must be a US citizen with official ID, and must complete a non-disclosure agreement prior to the tour. Closed-toe shoes are required, no photography. Limited to 25 people.

GLACIER DISTILLING COMPANY

11:00am - 10241 HWY 2 East, Coram



From grains to glass, learn what it takes to make small-batch whiskey from mashing to fermentation to distillation, barreling, aging, proofing, and bottling (and drinking!). Be a part of a discussion of the processes and challenges of making 20+ different distilled spirit products in a small space and the importance of having both flexible processes and standard procedures. All ages may attend, must be 21+ to taste.

GLACIER STEEL ROOFING

1:00pm - 139 Alder Dr., Kalispell



Glacier Steel Products is a locally owned company who specializes in fabricating metal roofing, siding, and all related components. GSP started their journey in a small 5,000 square foot shop in Columbia Falls nearly 20 years ago and has grown into a 30,000 square foot state of the art facility in Kalispell. They work with everyone from DIY homeowners to custom applications both residential and commercial. As a small business, GSP knows the importance of shopping local, so they support other local businesses and provide jobs to keep families in the Flathead. They are also active with community projects and local youth sports.

GLACIER PRECAST CONCRETE

2:00pm - 175 Alder Dr., Kalispell



Glacier Precast Concrete produces a wide variety of poured concrete products ranging from architectural projects, homes, utility buildings, noise walls, well houses, and underground utility structures. During this tour, Glacier Precast will be manufacturing utility manholes for Denton, MT, a custom slide for Bigfork School, a restroom building for Columbia Falls, and other everyday products. During the tour, watch Glacier Precast's extensive manufacturing process including batching concrete, quality control testing, and pouring molds. Closed-toe shoes required. Please dress for the weather as a portion of the tour will be outside. Tour limited to 30 people.

NOMAD GLOBAL COMMUNICATION SOLUTIONS

3:30pm - 5414 HWY 2 West, Columbia Falls



Nomad designs and manufactures the world's best-connected mobile command and communication solutions, from nimble tactical vehicles to comprehensive command centers and all points in-between. Providing best-in-class products for government agencies, utilities, law enforcement, the military, first responders, and private companies, Nomad creates interoperable systems that work simply and work every time. Visitors will have the opportunity to tour the entire facility, learn about their technologically advanced solutions, and see numerous projects in various states of manufacturing. Closed-toe shoes are required. Tour limited to 40 people.

CALLING ALL EDUCATORS!

Are you a teacher, counselor, or school administrator who wants to engage your students in science, technology, engineering, and math, and inspire them to pursue related careers? Join us and Flathead Valley Community College for a continuing education day where we transform STEM into the production of the goods that are used every day.

We're partnering with industry experts to share the most up-to-date tools to give your students a leg up in manufacturing related education and careers, arm you with a variety of hands-on exercises to teach basic manufacturing principles in your classroom, and dive into how modern manufacturing has changed in the industry. Additionally, get a first-hand look at two advanced manufacturing companies right here in the Flathead to see what careers look like in action.

With an expected 3 million jobs in manufacturing expected to be available in the next few years, and 17% higher wages than average in Montana, it's time to start rethinking these high-paying, high-tech, clean, safe, and impactful careers - many of which don't require your students to pursue a four-year degree.

FRIDAY, OCTOBER 18 | 8:00AM - 5:00PM

Flathead Valley Community College

8 Hours of PIR credits available

Sign up via PIR.net or contact the Kalispell Chamber (406) 758-2801



29 participants from last year toured Weyerhaeuser

FROM TREES TO TABLES

CELEBRATING WOOD PRODUCT MANUFACTURING IN MONTANA



Forested areas cover approximately 22.5 million acres across Montana between public and private lands.

During a harvest operation, there are a wide variety of jobs needed, including fallers, buckers, tree climbers, choke setters, rigging slingers and chasers, log sorters, markers, movers, chip-pers, equipment operators, project managers and more.



Once harvested, logs are taken to the manufacturing facilities that begin turning the wood into finished products. In the Flat-head Valley, Weyerhaeuser and F.H. Stoltze are great examples. Consider attending the Oct 1 tour of Weyerhaeuser.



Careers in construction, finish carpentry, and consumer-goods use the products, like lumber, that come from manufacturers.



Wood products can be seen everywhere in your everyday life. Take a look at your walls, floors, household tools, cabinets, and tables. When you look around and see what else you can find, think of how many people in our communities have good, high-paying careers somewhere along this process of getting those things to you!



FLATHEAD TIMBER TOUR

THURSDAY, OCTOBER 17 - 12:30 - 5:00PM

Wood product manufacturing is one of the oldest industries here in Montana and annually we celebrate Montana Forest Products Week with the Flathead Timber Tour. This year, join us as we tour an active harvest!

In early July this year, the Montana Department of Natural Resources awarded the winning bid for the Liger Good Neighbor Authority (GNA) Timber Sale to St. Onge Logging of Kalispell. The Liger sale is Montana's third forest-management project to date utilizing the Good Neighbor Authority, an initiative which allows the state to manage the harvest of timber on federal lands. Liger is the first GNA project to take place on Flathead National Forest lands. The project is expected to generate approximately \$376,798, which will be reinvested into future forest-management projects such as hazardous fuels reduction, forest restoration, weed spraying, and stream improvement activities.

On the Timber Tour, you will be able to see machinery in action, hear about the Good Neighbor Authority, understand operations after harvest (see graphic to left), and learn about current fuels and wildlife management efforts.

Participants will board a bus that will depart from the Kalispell Chamber of Commerce and arrive back between 5:00-5:15pm. All participants must ride the bus. Please dress for the weather and wear footwear comfortable for walking on uneven dirt. Limited to 80 participants.



F.H. Stoltze
Land & Lumber



KALISPELL

Manufacturers Alliance

The Kalispell Manufacturers Alliance is an industry sector partnership comprised of manufacturing members of the Kalispell Chamber of Commerce.

Aluma Glass, Inc.
Applied Materials - PPC Business Unit
Bias Brewing
BMC West
Bonsai Brewing Project
Bushy Tail Screen Printing
Ceres Bakery
Connector Tech, LLC.
Converting Equipment International
Daily Inter Lake
Defiance Machine
Direct Source Cabinets and Design
FH Stoltze Land & Lumber Co.
Flathead Beacon
Flathead High School
Flathead Lake Brewing Co & Pubhouse
Flathead Valley Community College
Glacier Distilling Company
Glacier Pre-cast Concrete

Glacier Signs & Monuments, LLC
Glacier Steel Roofing Products, Inc.
Glacier Sun Winery/Rough Cut Cider
Great Northern Brewing Company
Hurraw! Balm LLC
Insty-Prints
Kalispell Brewing Company
Kalispell Denture Studio
Kalispell Kreamery
Kalispell Montana Log Homes
Kalispell Truss Center
LC Staffing
Maven Coffee Works
Montana Artesian Water Company
Montana Gold Bullet, Inc.
Mountain Meadow Herbs
Nomad Global Communication Solutions
Northern Care, Inc. Prosthetics & Orthotics
Northwest Cabinet Works

Pella Windows & Doors
PROOF Research
Sacred Waters Brewing Company
SAJE Pharma, LLC.
Scott Company
Sierra Pacific Windows
Sonju Industrial, Inc.
Spotted Bear Spirits
SunRift Beer Company
Tabletree Montana
Tamarack Alehouse & Grill
The Towne Printer
Thompson Precision
Timberline Tool, LLC
Western Building Center
Weyerhaeuser
Whistling Andy Distilling
World Spice Merchants
Wrap Hive

CELEBRATE FLATHEAD
MANUFACTURING
SEPTEMBER -OCTOBER '19